



PRINCIPAL PARTNER



# Covid Contact Tracing March 2022

Proudly Affiliated with



ShootingStars



# Context

- Due to rapidly increasing caseload, Department of Health (DoH) will no longer play the sole role in terms of Contact tracing
  - Focus will be on high risk settings
  - WA Health will no longer advise if you are a close contact
- Expectation will be on businesses to play a greater role in managing the process and related communications
  - Venues, Associations and Clubs will now have this responsibility
- DoH have emphasised the definition and application of a 'close contact' in managing this process
  - If participants do not meet the definition, they should not be deemed a close contact

## Definition of a close contact, from WA Health

A **close contact**, in a high and very high caseload environment, will be defined as:

- A household member or intimate partner of a person with COVID-19 who has had contact with them during their infectious period, or
- Someone who has had close personal interaction with a person with COVID-19 during their infectious period:
  - has had at least 15 minutes face-to-face contact where masks were not worn by the exposed person and the person with COVID-19, or
  - has spent greater than two hours within a small room or classroom environment with a case during their infectious period, where masks have been removed for this period, or
- Someone who has been advised by WA Health that they are a close contact.

Guidance materials provided by DoH can be found here

[https://ww2.health.wa.gov.au/Articles/A\\_E/Coronavirus/COVID19-information-for-business-and-industry/TTIQ-Plan](https://ww2.health.wa.gov.au/Articles/A_E/Coronavirus/COVID19-information-for-business-and-industry/TTIQ-Plan)



# NiWA Scenarios and Responsibilities\* (non-Glass Jar Australia)

The table below outlines the scenarios where cases may be detected

Gold Netball Centre	NWA/Fever	Intra-Club	Association
External patrons	Competitions	Competitions	Competitions
Events	Events	Events	Events
Corporate	Training	Training	Training
Contractors	Trials	Trials	Trials
Service Providers	Carnivals	Carnivals	Carnivals
Workforce	Workforce	Workforce	Workforce

\*Recommend Clubs/Associations  
nominate a Covid Coordinator

# Response Plan – Clubs/Associations

## GIG WANL, Clubs/Association Events & Activities

Clubs

Associations

GIG WANL



## Positive Case Identified

Identify close contacts (participants/officials, etc.)  
Inform Committee, Association & identified contacts  
Individual informs DoH

Inform **covidinfo@netballwa.com.au** at NWA & other clubs/members as appropriate  
Individual informs DoH

Inform **David Lindsay** at NWA  
NWA identifies close contacts and informs participants as appropriate



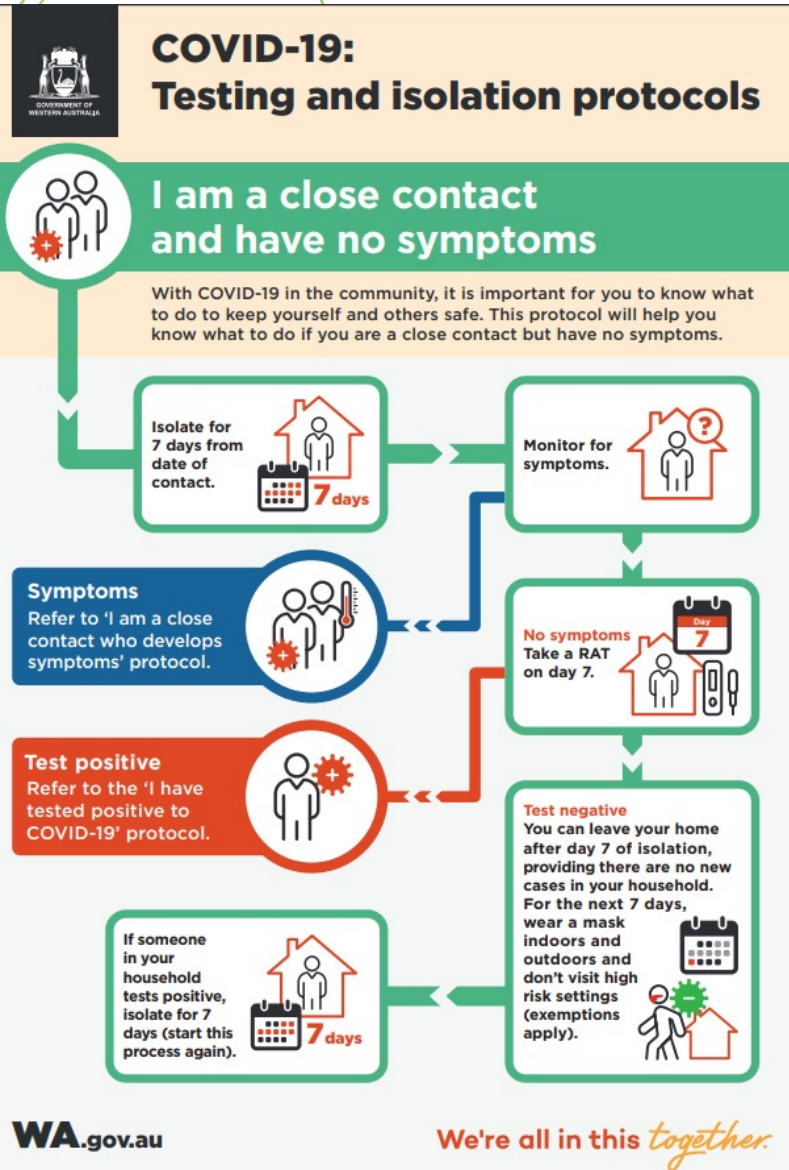
## Individuals test & isolate

According to prevailing guidelines from DoH  
Exposed areas cleaned

According to prevailing guidelines from DoH  
Exposed areas cleaned

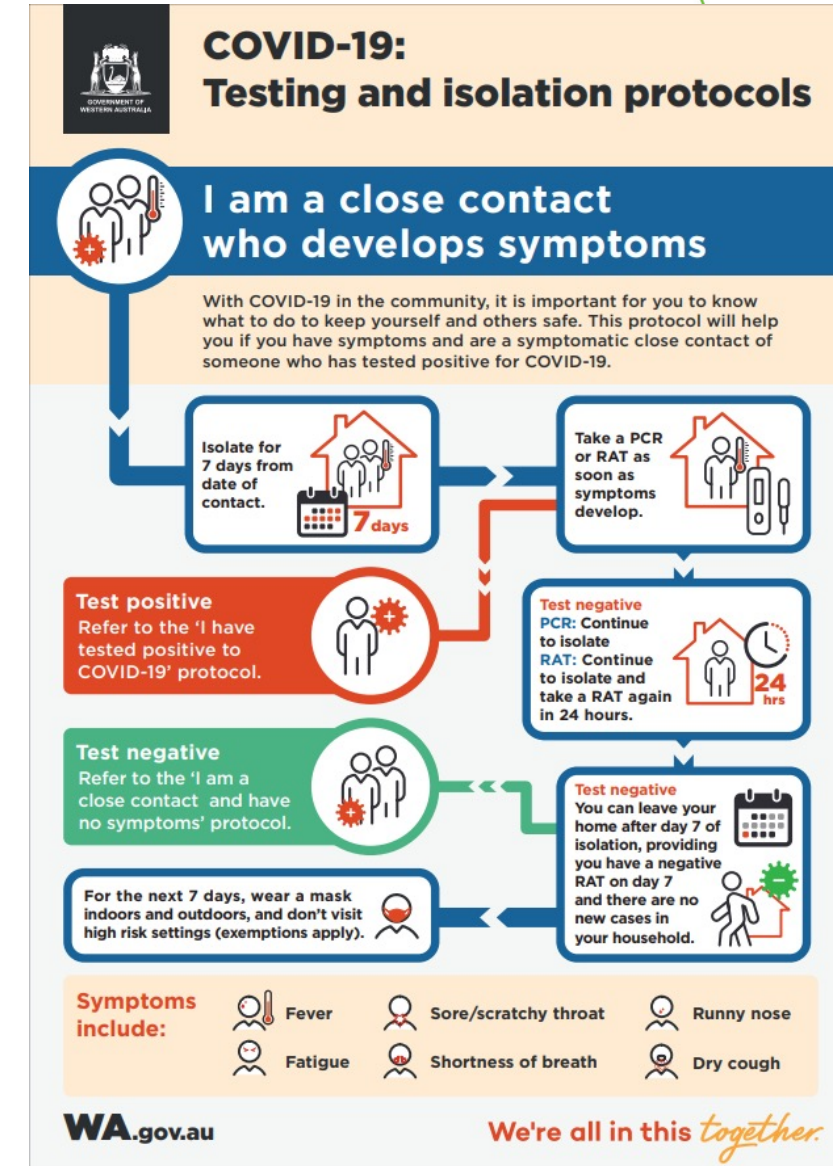
According to prevailing guidelines from DoH  
Exposed areas cleaned

# Testing and Isolation Protocols



Isolate for 7 days  
Monitor for Symptoms  
RAT on Day 7  
If negative then able to leave home

Isolate for 7 days  
RAT or PCR immediately  
Retest  
RAT on Day 7  
If negative then able to leave home

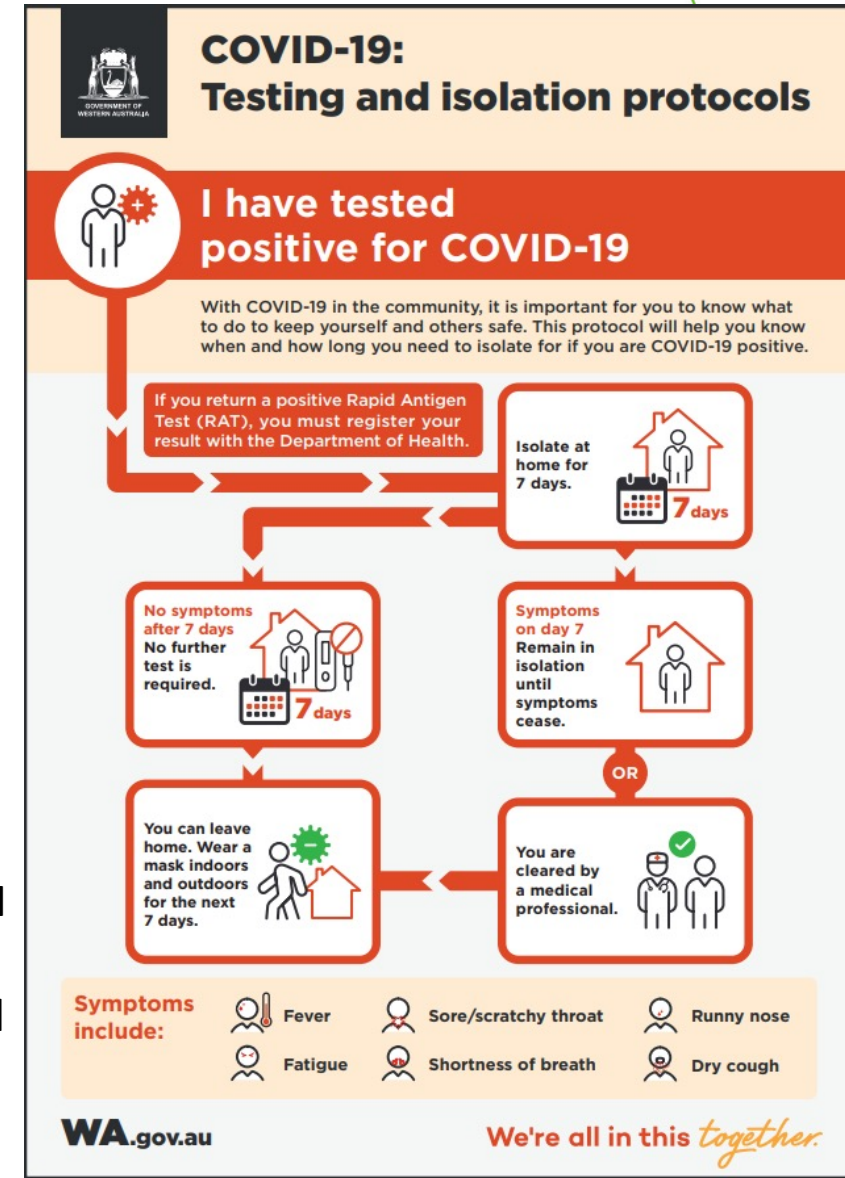


# Testing and isolation Protocols



Take a PCR or RAT  
Isolate until results  
If negative remain at home  
until symptoms clear

Register result with DoH  
Isolate for 7 days  
Remain in isolation until  
symptoms clear





# Templates & Resources

**Managing Covid Booklet from the State Government – general summary and useful tool to have.**

<https://www.wa.gov.au/system/files/2022-03/Managing-COVID-19-booklet.pdf>

**DoH Information for Business & Industry**

[https://ww2.health.wa.gov.au/Articles/A\\_E/Coronavirus/COVID19-information-for-business-and-industry/TTIQ-Plan](https://ww2.health.wa.gov.au/Articles/A_E/Coronavirus/COVID19-information-for-business-and-industry/TTIQ-Plan)

**Small Business Council Guide to Managing Covid**

<https://www.smallbusiness.wa.gov.au/sites/default/files/managing-covid-19-in-your-workplace-guide.pdf>

# Summary

- Due to increasing caseloads, Clubs and Associations now have a responsibility in relation to contact tracing
- Please refer to the definition of 'close contact' which will help clarify the appropriate response
- We recommend the nomination of Covid Officer(s) as a primary point of contact for Club & Association members
- Most likely transmission will occur off court rather than on
  - Changing rooms
  - social interaction before & after games
- We recommend Clubs develop procedures to help minimise this level of contact
- Templates and Resources provided to help inform and support
- Please address all queries (excluding GIG WANA) to **covidinfo@netballwa.com.au**.

*Proudly Affiliated with*